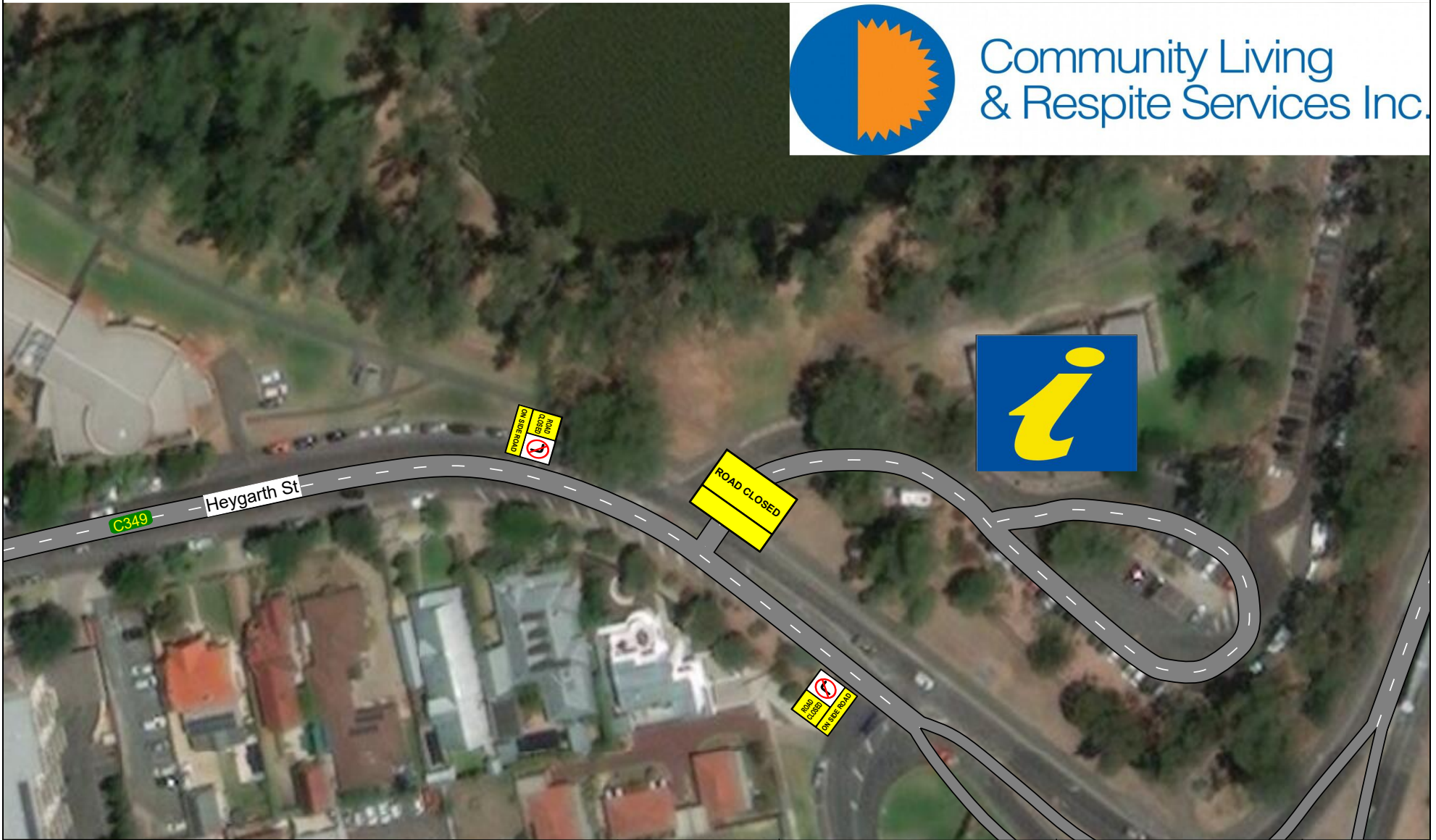



Community Living  
& Respite Services Inc.





**Date:**  
12/07/2022

**Client:**  
Community & Respite Living

**Job Location:**  
Heygarth St, Echuca

**Drawn by:**  
Peta leighton

**Checked By:**  
Kyle Parish

**RIICWD503D No.**  
76034

**TGS No.** G22-0855

Minimum Road & Lane Width	Road Width	Lane Width	How CLOSE a worker is to moving traffic (without safety barriers)	Reduced Worksite Speed Limit
Local Council Road	5.0M	3.0M	0 To 1.0M	40 KM/H
Other Less Than 60 KPH	6.0M	3.0M	1.0M To 3.0M	40 KM/H*
Other Greater Than 60KPH	7.0M	3.5M	3.0M To 6.0M	50KM/H*
			6.0M To 9.0M	60 KM/H, but 60KM/H on arterial roads & Freeways
			Above 9.0M	Posted Speed limits* 80KM/H on Freeways

Bollard Spacing Table	<50 KM/H	>50KM/H To 70 KM/H	>70 KM/H	Lateral Shift Markers (LSM) Spacing	Number of LSM Required	Approx LSM Spacing
Lateral Shift Taper	4.0M	12.0M	18.0M	Taper Length		
Merge Taper	4.0M	9.0M	12.0M	30.0M Taper	2	15.0M
Bollards Closing Shoulder	4.0M	18.0M	24.0M	60.0M Taper	3	25.0M
Vollards Closing Lane	4.0M	18.0M	24.0M	115.0M Taper	4	30.0M
Bollards Between Opposing Lanes (i.e. Contraflow)	4.0M	12.0M	18.0M	130.0M Taper	4	35.0M
				145.0M Taper	4	45.0M

**Notes**

- All signage used will be in accordance with AS 1742.3-2009
- GAME takes no responsibility of TGS if not implemented by GAME
- TGS not to Scale

60

Please Note

Existing Speed Signs to be covered for duration of works and reinstated at end of works

**Traffic Controller Instructions**

- Drive through site and check signage is visual from drivers perspective
- The location of signs shown on this plan may be varied slightly during implementation to improve visibility and effectiveness.
- Assist any pedestrians around the worksite away from hazards as required
- TC's to assist Public Transport operations as required
- Monitor and record 2 hourly sign checks
- Contact TMC to activate/de-activate MOA as required
- At all times maintain escape route

**GPS**

-36.12410850731601,  
144.75104994793344

